

U.S.S. Monitor Steam Engine

* Revised 3-31-2022
See Sheet 2 RWC

© 2018 R.W.Carlstedt

Material Cast Iron	Drawn By - Date RWC 12-2018	Sub-Assembly Cylinder Assembly
Weight (Lbs) 5081.894	Description	
Scale 1:16		
Part # C 2		

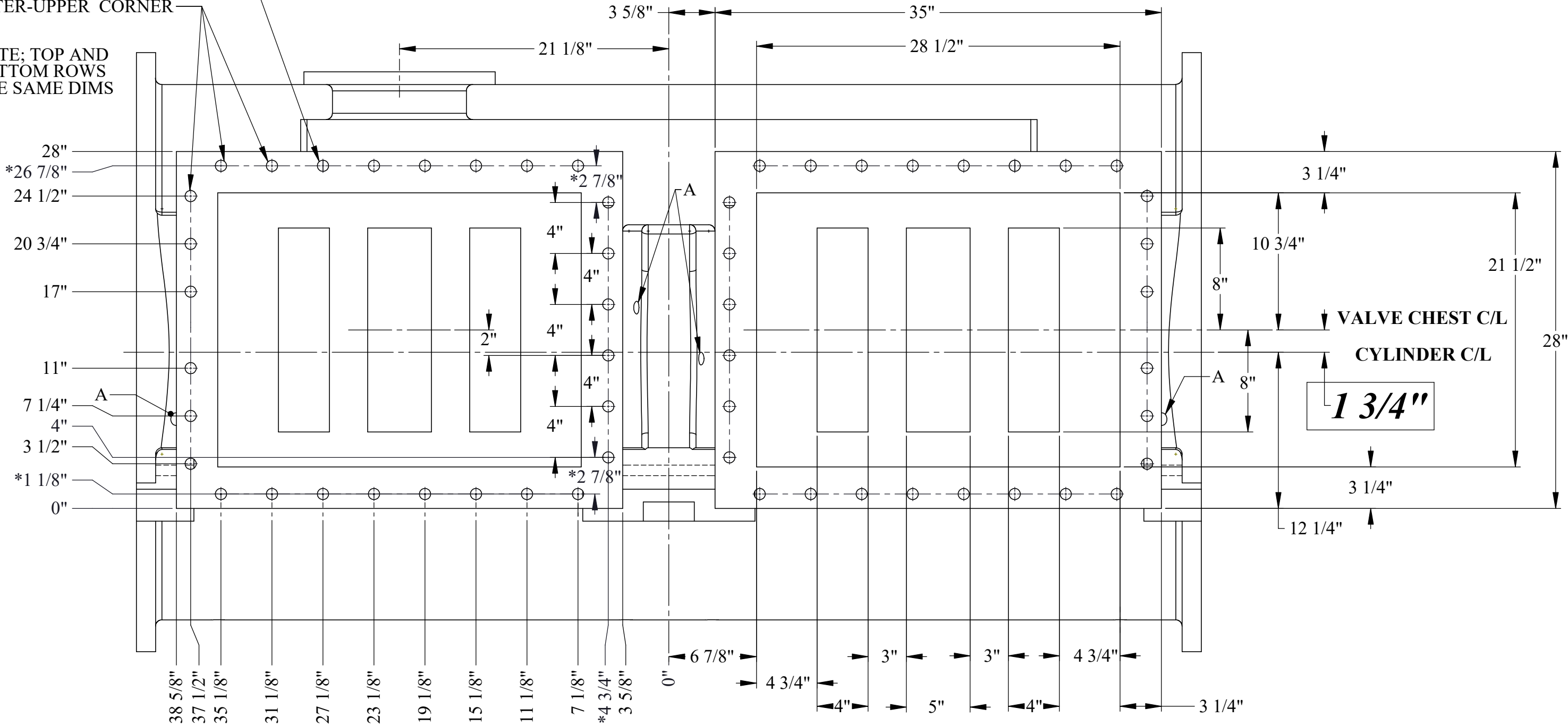
Cylinder
SHEET 1 OF 4

NOTE:
VALVE CHESTS AND VALVE FACES
ARE MIRROR IMAGES OF EACH OTHER

NOTE : 25 - 7/8 DIA. "THREADED
HOLES 1-1/2" DP. AS SHOWN

NOTE: 7/8 " THRU HOLES
3-ONLY-AS SHOWN IN
OUTER-UPPER CORNER

NOTE; TOP AND
BOTTOM ROWS
ARE SAME DIMS



TOP AND BOTTOM CHEST HOLES
ARE ALLIGNED TO SAME DIMENSIONS

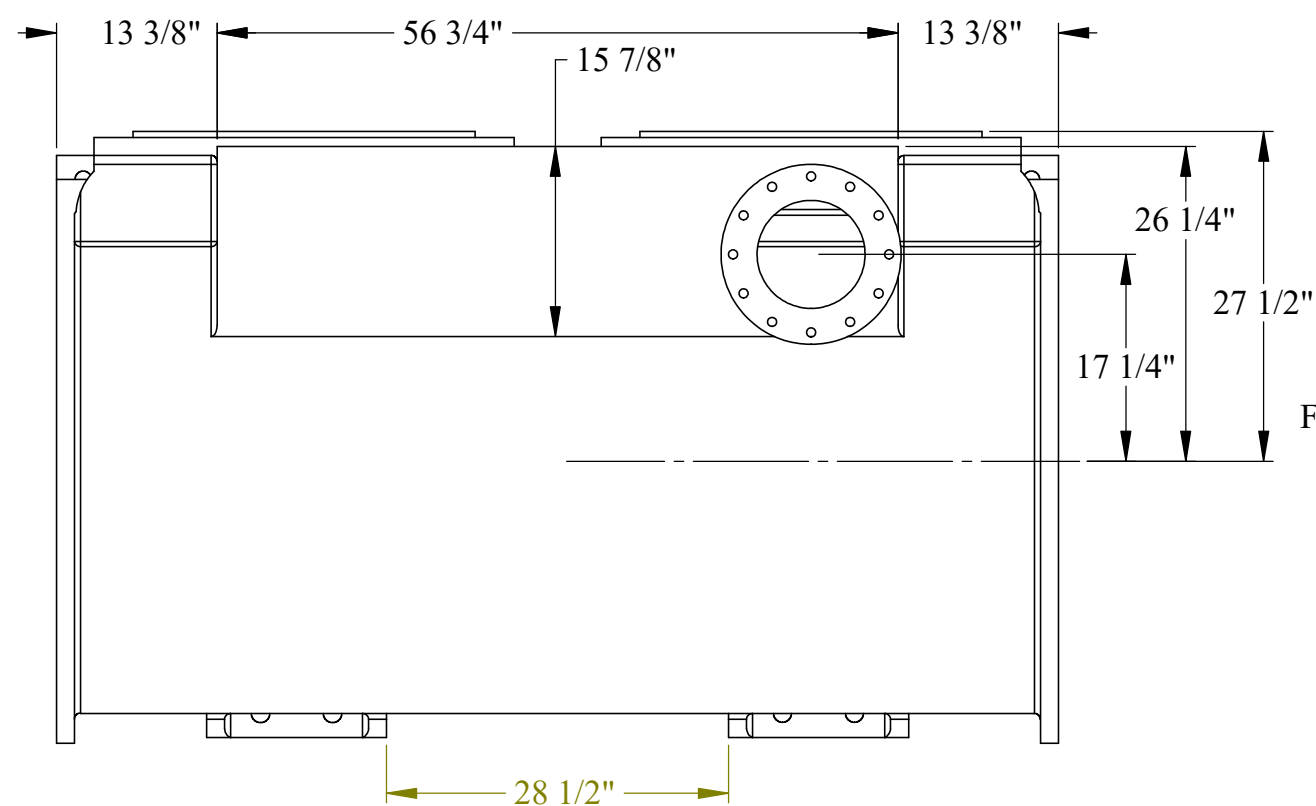
NOTE: -A-
4- 1 " THREADED HOLES
USED FOR INDICATOR
COCKS -THRU TO INTAKE
STEAM PASSAGEWAY
NO DETAILS

VALVE FACE AND HOLE DETAILS

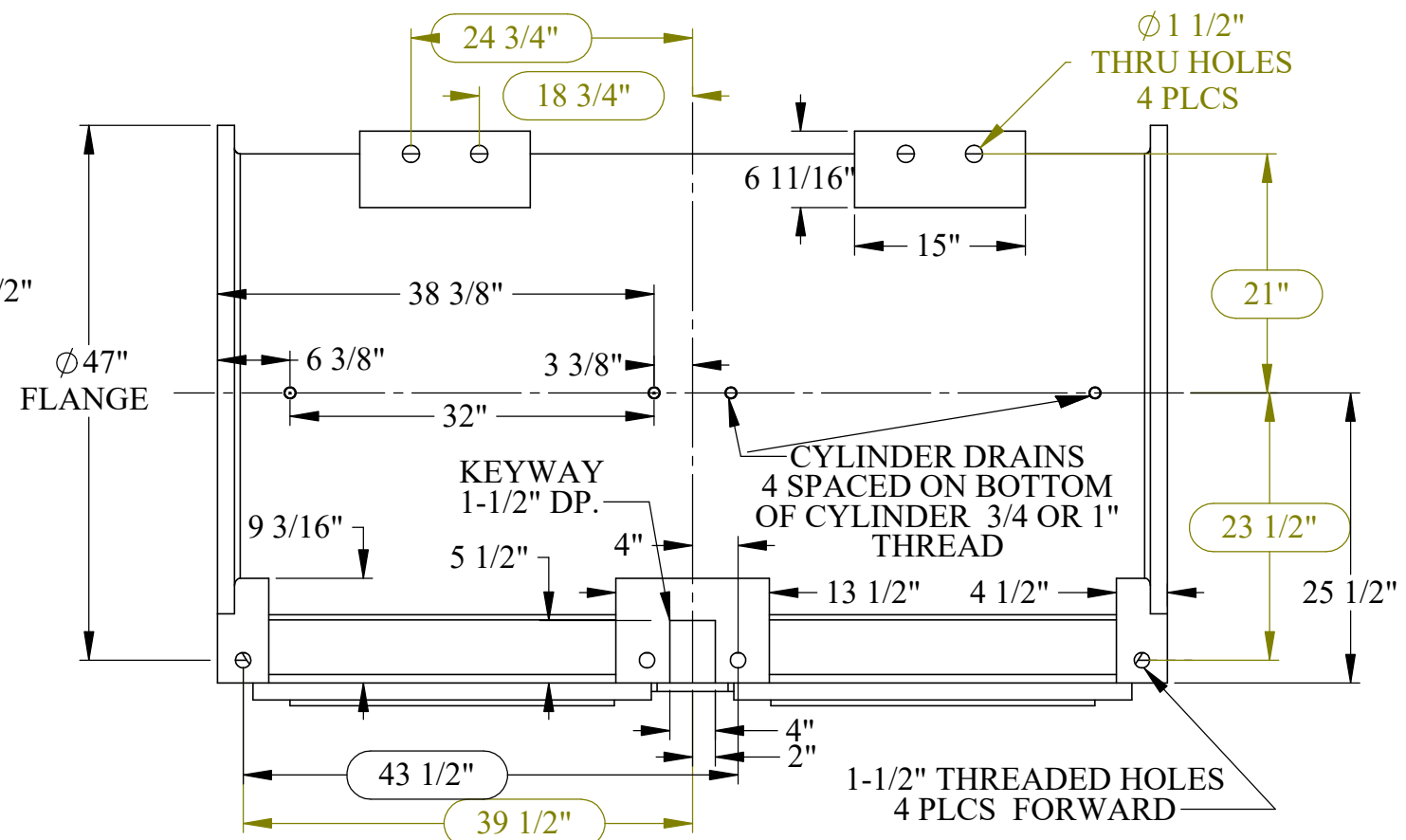
U.S.S. Monitor Steam Engine

* Revised 3-31-2022 RWC	Material Cast Iron	Drawn By - Date RWC 10-2018	Sub-Assembly Cylinder Assembly
	Weight (Lbs) 5081.894	Description Cylinder SHEET 2 OF 4	
	Scale 1:8		
	Part # C 2		

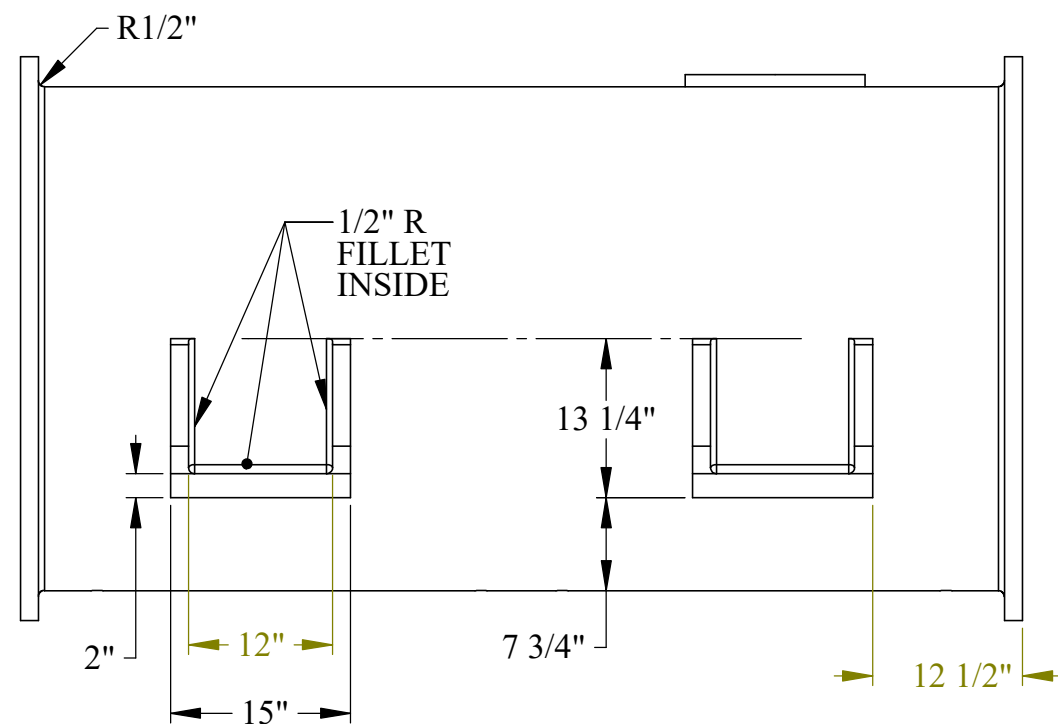
© 2018 R.W.Carlstedt



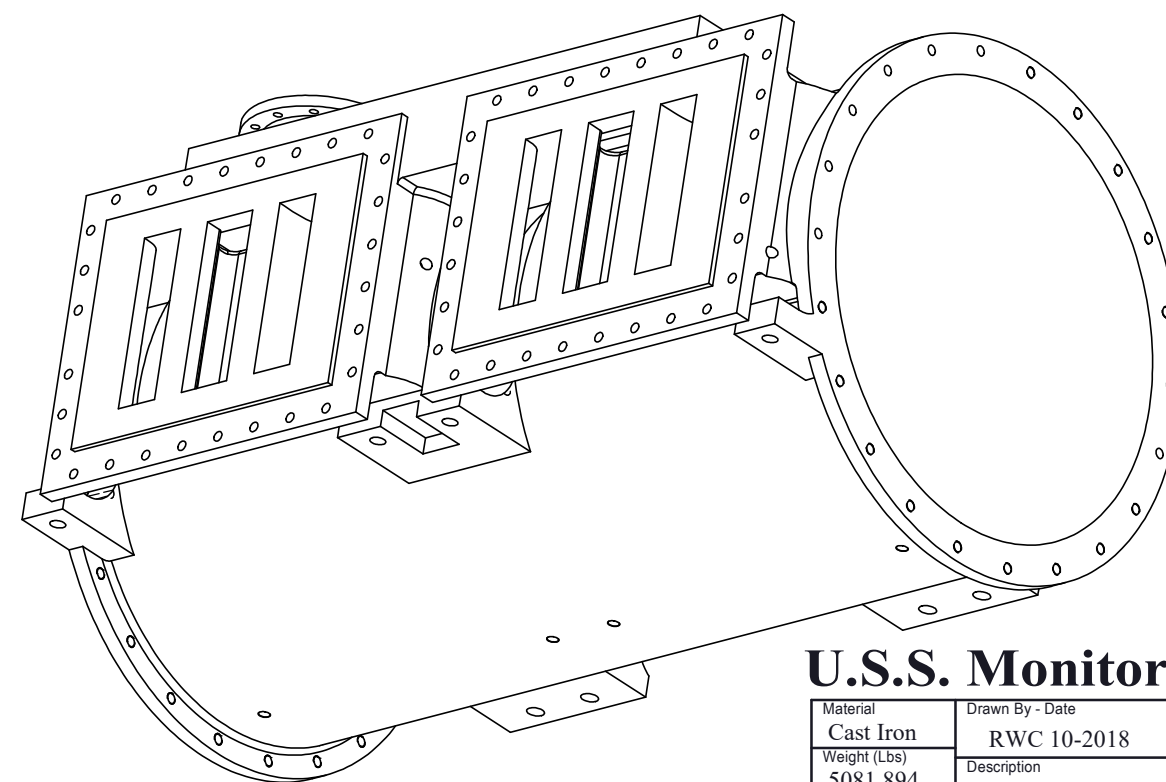
TOP VIEW



BOTTOM VIEW-CYLINDER MOUNTS AND KEYWAY



VIEW FROM AFT



U.S.S. Monitor Steam Engine

Material Cast Iron	Drawn By - Date RWC 10-2018	Sub-Assembly Cylinder Assembly
Weight (Lbs) 5081.894	Description Cylinder	
Scale 1:16		
Part # C 2		

SHEET 3 OF 4

